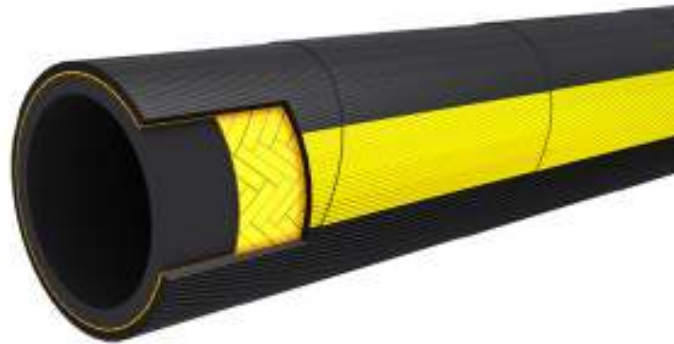


**ST** **STRENGTH INDUSTRIES**  
**HOSES & FITTINGS**



**STRENGTH INDUSTRIES**  
**HOSES & FITTINGS**

# HYDRAULIC HOSE



## SAE100 R1 AT

### CONSTRUCTION

This hose consists of an inner tube of oil-resistant synthetic rubber, a single wire braid reinforcement, and an oil- and weather-resistant synthetic rubber cover.

### APPLICATIONS

Hose range suitable to carry hydraulic fluids, such as glycol, mineral oils, emulsion, hydrocarbons, etc.

### WORKING TEMPERATURE

From -40°C up to +100°C

DN	Hose I.D		Wire O.D	Hose O.D	Working Pressure		Burst Pressure		Minimum Bend Radius	Weight	Length
	inch	mm	mm	mm	MPa	psi	MPa	psi	mm	kg/m	metres
5	3/16	4.8	9.5	11.8	25.0	3630	100.0	14280	89	0.19	50/100
6	1/4	6.4	11.1	13.4	22.5	3270	90.0	12840	102	0.21	50/100
8	5/16	7.9	12.7	15.0	21.5	3120	85.0	12280	114	0.24	50/100
10	3/8	9.5	15.1	17.4	18.0	2615	72.0	10280	127	0.33	50/100
13	1/2	12.7	18.3	20.6	16.0	2320	64.0	9180	178	0.41	50/100
16	5/8	15.9	21.4	23.7	13.0	1890	52.0	7420	203	0.45	50/100
19	3/4	19.0	25.4	27.7	10.5	1530	42.0	6000	241	0.58	50/100
25	1	25.4	33.3	35.6	8.8	1280	35.0	5020	305	0.88	50
32	1 1/4	31.8	40.5	43.5	6.3	920	25.0	3600	419	1.23	20/40
38	1 1/2	38.1	46.8	50.6	5.0	730	20.0	2860	508	1.51	20/40
51	2	50.8	60.2	64.0	4.0	580	16.0	2280	635	1.97	20/40



## SAE100 R2 AT

### CONSTRUCTION

This hose consists of an inner tube of oil-resistant synthetic rubber, two wire braids reinforcement, and an oil- and weather-resistant synthetic rubber cover.

### APPLICATIONS

Hose range suitable to carry hydraulic fluids, such as glycol, mineral oils, emulsion, hydrocarbons, etc.

### WORKING TEMPERATURE

From -40°C up to +100°C

DN	Hose I.D		Wire O.D	Hose O.D	Working Pressure		Burst Pressure		Minimum Bend Radius	Weight	Length
	inch	mm			mm	mm	MPa	psi			
5	3/16	4.8	11.1	13.4	41.4	6000	165	23720	89	0.32	50/100
6	1/4	6.4	12.7	15.0	40.0	5800	160	22840	102	0.36	50/100
8	5/16	7.9	14.3	16.6	36.0	5250	140	20000	114	0.45	50/100
10	3/8	9.5	16.7	19.0	33.1	4800	132	18840	127	0.54	50/100
13	1/2	12.7	19.8	22.2	27.6	4000	110	15720	178	0.68	50/100
16	5/8	15.9	23	25.4	25.0	3630	100	14280	203	0.8	50/100
19	3/4	19.0	27	29.3	21.5	3120	85	12280	241	0.94	50/100
25	1	25.4	34.9	38.0	16.5	2400	65	9420	305	1.35	50
32	1 1/4	31.8	44.5	48.3	12.5	1820	50	7140	419	2.15	20/40
38	1 1/2	38.1	50.8	54.6	9.0	1310	36	5140	508	2.65	20/40
51	2	50.8	63.5	67.3	8.0	1160	32	4560	635	3.42	20/40



## SAE 100 R5

### CONSTRUCTION

This hose consists of an inner tube of oil-resistant synthetic rubber, single wire braids reinforcement, and an oil- and weather-resistant synthetic rubber cover.

### APPLICATIONS

Hose range suitable to carry hydraulic fluids, such as glycol, mineral oils, emulsion, hydrocarbons, etc.

### WORKING TEMPERATURE

From -40°C up to +100°C

DN	Hose I.D		Hose O.D	Working Pressure		Burst Pressure		Minimum Bend Radius	Weight	Length
	inch	mm		MPa	psi	MPa	psi			
5	3/16	4.8	13.2	20.7	3000	82.7	12000	76	0.24	50/ 100
6	1/4	6.4	14.8	20.7	3000	82.7	12000	86	0.29	50/ 100
8	5/16	7.9	17.1	15.5	2250	62.1	9000	102	0.36	50/ 100
11	13/32	10.3	19.5	13.8	2000	55.2	8000	117	0.48	50/ 100
13	1/2	12.7	23.4	12.1	1750	48.3	7000	140	0.55	50/ 100
16	5/8	15.9	27.4	10.3	1500	41.4	6000	165	0.65	50/ 100
22	7/8	22.2	31.4	5.5	800	22.1	32000	187	0.69	20/ 40
28	1 1/8	28.6	38.1	4.3	625	17.2	25000	229	0.84	20/ 40
35	1 3/8	35.0	44.4	3.4	500	13.8	2000	267	1.03	20/ 40
46	1 13/16	46.0	56.4	2.4	350	9.6	14000	337	1.26	20/ 40
60	2 3/8	60.5	73.0	2.4	350	9.6	14000	610	2.00	20/ 40
75	3	75.5	90.5	1.4	200	5.6	800	840	3	20/ 40



## SAE 100 R12 AT

### CONSTRUCTION

This hose consists of an inner tube of oil-resistant synthetic rubber, four-wire braid reinforcement, and an oil- and weather-resistant synthetic rubber cover.

### APPLICATIONS

Hose range suitable to carry hydraulic fluids, such as glycol, mineral oils, emulsion, hydrocarbons, etc.

### WORKING TEMPERATURE

From -40°C up to +121°C

DN	Hose I.D		Wire O.D	Hose O.D	Working Pressure		Burst Pressure		Minimum Bend Radius	Weight	Length
	inch	mm	mm	mm	MPa	psi	MPa	psi	mm	kg/m	metres
10	3/8	9.5	17.2	20.3	27.5	4000	110.3	16000	125	0.62	50
13	1/2	12.7	20.7	23.8	27.5	4000	110.3	16000	180	0.85	50
16	5/8	15.9	24.6	27.4	27.5	4000	110.3	16000	200	1.29	50
19	3/4	19.0	27.7	30.7	27.5	4000	110.3	16000	240	1.47	50
25	1	25.4	34.9	38.0	27.5	4000	110.3	16000	300	2.0	20
32	1 1/4	31.8	43.9	47.0	20.7	3000	82.7	12000	420	2.86	20
38	1 1/2	38.1	50.4	53.5	17.2	2500	68.9	10000	500	3.24	20
51	2	50.8	63.7	66.7	17.2	2500	68.9	10000	630	4.8	20



## SAE 100 R13 AT

### CONSTRUCTION

This hose consists of an inner tube of oil-resistant synthetic rubber, multiple spiral wire braids reinforcement, and an oil- and weather-resistant synthetic rubber cover.

### APPLICATIONS

Hose range suitable to carry hydraulic fluids, such as glycol, mineral oils, emulsion, hydrocarbons, etc.

### WORKING TEMPERATURE

From -40°C up to +121°C

DN	Hose I.D		Wire O.D	Hose O.D	Working Pressure		Burst Pressure		Minimum Bend Radius	Weight	Length
	inch	mm	mm	mm	MPa	psi	MPa	psi	mm	kg/m	metres
19	3/4	19.0	28.4	32.1	34.5	5000	138.0	20000	240	1.68	20
25	1	25.4	35.2	38.7	34.5	5000	138.0	20000	300	2.24	20
32	1 1/4	31.8	41.9	50.2	34.5	5000	138.0	20000	420	3.90	20
38	1 1/2	38.1	48.8	57.7	34.5	5000	138.0	20000	500	5.07	20
51	2	50.8	63.2	71.5	34.5	5000	138.0	20000	630	7.91	20



## SAE 100 R16 AT

### CONSTRUCTION

This hose consists of an inner tube of oil-resistant synthetic rubber, one and two wire braids reinforcement, and an oil- and weather-resistant synthetic rubber cover.

### APPLICATIONS

Hose range suitable to carry hydraulic fluids, such as glycol, mineral oils, emulsion, hydrocarbons, etc.

### WORKING TEMPERATURE

From -40°C up to +100°C

DN	Hose I.D		Hose O.D	Working Pressure		Burst Pressure		Minimum Bend Radius	Weight	Length
	inch	mm	mm	MPa	psi	MPa	psi	mm	kg/m	metres
6	1/4	6.4	13.4	34.5	5000	138.0	20000	50	0.27	50/100
8	5/16	7.9	15.0	29.3	4250	117.0	17000	55	0.35	50/100
10	3/8	9.5	17.4	27.5	4000	110.0	16000	65	0.42	50/100
13	1/2	12.7	20.6	24.0	3500	96.0	14000	90	0.52	50/100
16	5/8	15.9	23.8	19.0	2750	62.0	11000	100	0.63	50/100
19	3/4	19.0	27.8	15.5	2250	55.0	9000	120	0.81	50
25	1	25.4	35.9	13.8	2000	45.0	8000	150	1.17	50



## SAE 100 R17 AT

### CONSTRUCTION

This hose consists of an inner tube of oil-resistant synthetic rubber, one and two wire braids reinforcement, and an oil- and weather-resistant synthetic rubber cover.

### APPLICATIONS

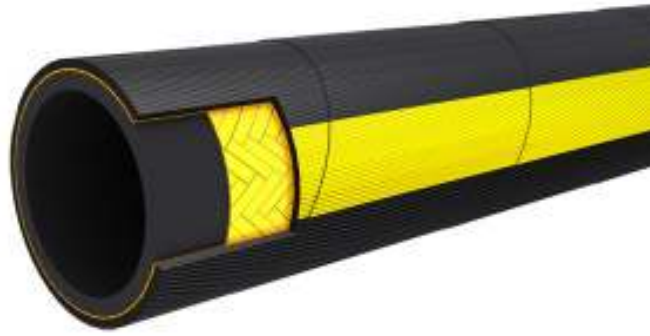
Hose range suitable to carry hydraulic fluids, such as glycol, mineral oils, emulsion, hydrocarbons, etc.

### WORKING TEMPERATURE

From -40°C up to +100°C

Size (Inch)	Inside Diameter		Outside Diameter		Cover Thickness		Proof Pressure (Mpa)	Working Pressure (Mpa)	Burst Pressure (Mpa)	Bend Radius (mm)
	Max (mm)	Min (mm)	Max Wire OD mm	Max Hose OD mm	Max (mm)	Min (mm)				
1/4"	7.0	6.2	11	13.20	1.5	0.76	42.0	21.0	84.0	50.0
5/16"	8.5	7.7	13	15.00	1.5	0.76	42.0	21.0	84.0	55.0
3/8"	10.1	9.3	15	17.0	1.5	0.8	42.0	21	84.0	65.0
1/2"	13.5	12.3	18.8	21.1	1.5	0.8	42.0	21	84.0	90.0
5/8"	16.7	15.5	23.6	25.9	1.5	0.8	42.0	21	84.0	105.0
3/4"	19.8	18.6	27.7	30.3	1.5	0.8	42.0	21	84.0	125.0
1"	26.4	25.0	35.6	38.6	2.2	0.8	42.0	21	84.0	150.0





DIN EN 系列

**DIN EN853 1SN**

Construction
This hose consists of an inner tube of oil-resistant synthetic rubber, a single wire braid reinforcement, and an oil- and weather-resistant synthetic rubber cover.
Applications
Hose range suitable to carry hydraulic fluids, such as glycol, mineral oils, emulsion, hydrocarbons, etc.
Working Temperature
From -40°C up to +100°C

DN	Hose I.D		Wire O.D	Hose O.D	Working Pressure		Burst Pressure		Minimum Bend Radius	Weight	Length
	inch	mm	mm	mm	MPa	psi	MPa	psi	mm	kg/m	metres
5	3/16	4.8	9.5	11.8	25.0	3630	100.0	14280	89	0.19	50/100
6	1/4	6.4	11.1	13.4	22.5	3270	90.0	12840	102	0.21	50/100
8	5/16	7.9	12.7	15.0	21.5	3120	85.0	12280	114	0.24	50/100
10	3/8	9.5	15.1	17.4	18.0	2615	72.0	10280	127	0.33	50/100
13	1/2	12.7	18.3	20.6	16.0	2320	64.0	9180	178	0.41	50/100
16	5/8	15.9	21.4	23.7	13.0	1890	52.0	7420	203	0.45	50/100
19	3/4	19.0	25.4	27.7	10.5	1530	42.0	6000	241	0.58	50/100
25	1	25.4	33.3	35.6	8.8	1280	35.0	5020	305	0.88	50
32	1 1/4	31.8	40.5	43.5	6.3	920	25.0	3600	419	1.23	20/40
38	1 1/2	38.1	46.8	50.6	5.0	730	20.0	2860	508	1.51	20/40
51	2	50.8	60.2	64.0	4.0	580	16.0	2280	635	1.97	20/40



## DIN EN853 2SN

Construction
This hose consists of an inner tube of oil-resistant synthetic rubber, two wire braids reinforcement, and an oil- and weather-resistant synthetic rubber cover.
Applications
Hose range suitable to carry hydraulic fluids, such as glycol, mineral oils, emulsion, hydrocarbons, etc.
Working Temperature
From -40°C up to +100°C

DN	Hose I.D		Wire O.D	Hose O.D	Working Pressure		Burst Pressure		Minimum Bend Radius	Weight	Length
	inch	mm	mm	mm	MPa	psi	MPa	psi	mm	kg/m	metres
5	3/16	4.8	11.1	13.4	41.4	6000	165	23720	89	0.32	50/100
6	1/4	6.4	12.7	15.0	40.0	5800	160	22840	102	0.36	50/100
8	5/16	7.9	14.3	16.6	36.0	5250	140	20000	114	0.45	50/100
10	3/8	9.5	16.7	19.0	33.1	4800	132	18840	127	0.54	50/100
13	1/2	12.7	19.8	22.2	27.6	4000	110	15720	178	0.68	50/100
16	5/8	15.9	23	25.4	25.0	3630	100	14280	203	0.8	50/100
19	3/4	19.0	27	29.3	21.5	3120	85	12280	241	0.94	50/100
25	1	25.4	34.9	38.0	16.5	2400	65	9420	305	1.35	50
32	1 1/4	31.8	44.5	48.3	12.5	1820	50	7140	419	2.15	20/40
38	1 1/2	38.1	50.8	54.6	9.0	1310	36	5140	508	2.65	20/40
51	2	50.8	63.5	67.3	8.0	1160	32	4560	635	3.42	20/40



## DIN EN856 4SH

Construction:

This hose consists of an inner tube of oil-resistant synthetic rubber, four-spiral wire reinforcement, and an oil- and weather-resistant synthetic rubber cover.

Applications:

Hose range suitable to carry hydraulic fluids, such as glycol, mineral oils, emulsion, hydrocarbons, etc.

Working Temperature:

From -40°C up to +100°C

	Hose I.D		Wire O.D	Hose O.D	Working Pressure		Burst Pressure		Minimum Bend Radius	Weight	Length
	inch	mm			MPa	psi	MPa	psi			
19	3/4	19.0	28.4	32.0	42.0	6000	168.0	24000	280	1.61	50
25	1	25.4	35.2	38.6	38.0	5500	152.0	22000	340	2.00	20
32	1 1/4	31.8	41.9	45.8	32.5	4700	130.0	18800	460	2.64	20
38	1 1/2	38.1	48.8	53.3	29.0	4200	116.0	16800	560	3.36	20
51	2	50.8	63.2	68.1	25.0	3600	100.0	14400	700	4.98	20

# INDUSTRY HOSE



## Water Hose



Tube: SBR blended, black, smooth

Reinforcement: textile braided high tensile synthetic yarn

Cover: EPDM/SBR blended, black, or red, Weather and Abrasion resistant, smooth or fluted

Applications: general water service in industry, gardens, garage spray, watering lawns.

Temperature: -30°C + 80°C

Brading: as request

Length: 40,50M

Packing: trans. P.V.C. film

ID (mm)	ID (inch)	Wall (mm)	WP (bar)	BP (bar)	Radius (mm)	Weight (kg/m)
13	1/2	3,0	10	30	95	0.26
16	5/8	3,5	10	30	120	0.32
19	3/4	3,5	10	30	140	0.45
25	1	4,0	8	24	180	0.62
32	1-1/4	5,0	6	18	210	0.82
38	1-1/2	5,5	6	18	250	0.92
50	2	6,5	4	12	360	1.60

## Air Hose



Tube: SBR blended, black, smooth

Reinforcement: textile braided high tensile synthetic yarn

Cover: EPDM/SBR blended, black, or red yellow, weather and ozone resistant

Applications: wide range service in general industrial services, mobiles shop pneumatic tools, etc.

Temperature: -35°C + 80°C

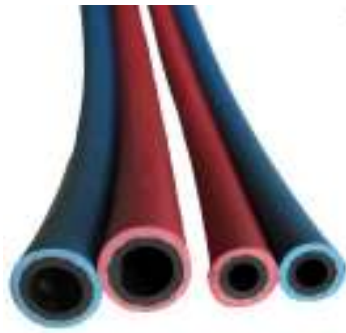
Branding: as request

Length: 40, 50M

Packing: trans. P.V.C. film

ID (mm)	ID (inch)	Wall (mm)	WP (bar)	BP (bar)	Radius (mm)	Weight (kg/m)
6	1/4	3,5	16 / 20	50 / 60	35	0.17
8	5/16	3,5	16 / 20	50 / 60	50	0.25
10	3/8	3,5	16 / 20	50 / 60	60	0.29
13	1/2	4,0	16	48	60	0.37
13	1/2	5,0	20	60	70	0.42
16	5/8	4,0	16	48	80	0.45
16	5/8	4,5	20	60	90	0.48
19	3/4	5,0	16	48	110	0.58
19	3/4	5,5	20	60	125	0.60
25	1	5,0	20	48	130	0.72
25	1	5,5	16	60	150	0.83
32	1-1/4	6,0	10	30	230	0.94
38	1-1-2	6,0	10	30	270	1.08
50	2	7,0	10	30	400	1.80

## Welding hose



**Tube:** EPDM/SBR blended, black, smooth

**Reinforcement:** textile braided high tensile synthetic yarn

**Cover:** EPDM/SBR blended, red and blue, smooth, weather and ozone, abrasion resistant

**Applications:** for conveying welding gases.

**Temperature:** -40??C + 90??C

**Branding:** as request

**Length:** 40, 50M

**Packing:** trans. P.V.C. film

Single line welding hose (Oxygen, Acetylene)

ID (mm)	Wall (mm)	WP (bar)	BP (bar)	Radius (mm)	Weight (kg/m)
5	3,2	20	60	30	0.15
5	3,2	20	60	30	0.15
6	3,5	20	60	35	0.17
6	3,5	20	60	35	0.17
8	3,5	20	60	50	0.25
8	3,5	20	60	50	0.25
9	3,5	20	60	50	0.27
9	3,5	20	60	50	0.27
10	3,5	20	60	60	0.29
10	3,5	20	60	60	0.29
13	4,5	20	60	60	0.39
13	4,5	20	60	60	0.39
16	4,5	20	60	70	0.45
16	4,5	20	60	70	0.45
19	5,5	20	45	80	0.58
19	5,5	20	45	80	0.58

Twin line welding hose (Oxygen, Acetylene)

Red (Acetylene)				Blue (Oxygen)			
ID mm	Wall mm	WP bar	BP bar	ID mm	Wall mm	WP bar	BP bar
5	3,2	20	60	5	3,2	20	60
6	3,5	20	60	6	3,5	20	60
6	3,5	20	60	8	3,5	20	60
8	3,5	20	60	8	3,5	20	60
9	3,5	20	60	9	3,5	20	60
10	3,5	20	60	10	3,5	20	60
10	3,5	20	60	6	3,5	20	60

ISO 3821, DIN 8541, BS 5120, SIS 248265

## LPG Hose



Tube: NBR, black, smooth

Reinforcement: textile braided high tensile synthetic yarn

Cover: Orange NEOPRENE Blended, ozone and weather-proof, smooth

Applications: for conveyance of liquid gas, home burner system, grill, oil-resistant

Temperature: -35°C + 90°C

Brading: as request

Length: as request

Packing: trans. P.V.C. film

ID (mm)	ID (inch)	Wall (mm)	WP (bar)	BP (bar)	Radius (mm)	Weight (kg/m)
5	3/16	3,0	12	60	18	0.13
6	1/4	3,6	12	60	20	0.15
8	5/16	3,5	12	60	27	0.20
10	3/8	3,5	12	60	33	0.26

BS 3212/2 DIN4815

## FULE OIL HOSE



Tube: black NITRIL rubber tube, oil and fuel resistant, smooth

Reinforcement: textile braided high tensile synthetic yarn

Cover: black smooth NEOPRENE rubber, oil, ozone, weather, abrasion resistant

Applications: in fuel systems like gasoline, diesel fuel, also suitable for loading and unloading tank cars, automobiles, oil refine and oil related industrials, etc.

Temperature: -40°C + 100°C

Brading: as request

Length: 40, 50M / as request

Packing: trans. P.V.C. film

ID (mm)	ID (inch)	Wall (mm)	WP (bar)	BP (bar)	Radius (mm)	Weight (kg/m)
6	1/4	3,5	16 / 20	50 / 60	23	0.16
8	5/16	3,5	16 / 20	50 / 60	28	0.23
10	3/8	3,5	16 / 20	50 / 60	35	0.26
13	1/2	4,0	12	40	53	0.35
13	1/2	4,5	16	50	58	0.42
16	5/8	4,0	12	40	70	0.36
16	5/8	4,5	16	50	78	0.43
19	3/4	4,5	12	40	95	0.45
19	3/4	5,0	16	60	105	0.54
25	1	4,5	12	40	120	0.60
25	1	5,0	16	50	130	0.67

J30R2 TYPE 1.2, J30R6 / BSAU 108/2



## OIL SUCTION HOSE



Tube: black NBR compound

Reinforcement: by Nylon cord ply with 1 helix steel wire embedded.

Cover: black CR compound, cloth surface with oil and weather resistant.

Applications: for suction and discharge oil hose for vessels, trucks.

Temperature: -30°C + 90°C

Packing: trans. P.V.C. film

ID (mm)	ID (inch)	OD (inch)	PLIES	Working pressure	
				(psi)	(bar)
25	1	1-5/16	2	100	7
32	1-1/4	1-5/8	2	100	7
38	1-1/2	1-7/8	2	100	7
51	2	2-7/16	2	100	7
63	2-1/2	3	2	80	5.5
76	3	3-1/2	2	80	5.5
89	3-1/2	4	2	50	3.5
102	4	4-9/16	2	50	3.5
127	5	5-5/8	2	45	3
152	6	6-5/8	2	35	2.5
Heavy duty					
25	1	1-3/8	2	150	10.5
32	1-1/4	1-11/16	2	150	10.5
38	1-1/2	2	2	150	10.5
51	2	2-1/2	2	120	8
63	2-1/2	3-1/16	2	100	7
76	3	3-9/16	2	100	7
89	3-1/2	4-1/16	2	70	5
102	4	4-11/16	2	70	5
127	5	5-11/16	2	50	3.5
152	6	6-3/4	4	50	3.5

## SAND BLAST HOSE



Tube: black antistatic abrasion resistant nature rubber compound

Reinforcement: by Nylon cord ply

Cover: black abrasion and antistatic rubber.

Applications: for industrial cleaning, cutting, polishing, casting serving services.

Temperature: -40°C + 80°C

Packing: trans. P.V.C. film

ID (mm)	ID (inch)	OD (inch)	PLIES	Working pressure	
				(psi)	(bar)
13	1/2	1-1/32	2	150	10
19	3/4	1-3/8	2	150	10
25	1	1-9/16	2	150	10
32	1-1/4	1-27/32	2	150	10
38	1-1/2	2-1/8	2	150	10
51	2	2-11/16	2	150	10

### Heavy-Duty

ID (mm)	ID (inch)	OD (inch)	PLIES	Working pressure	
				(psi)	(bar)
13	1/2	1-1/8	4	150	10
19	3/4	1-9/16	4	150	10
25	1	1-27/32	4	150	10
32	1-1/4	2-1/8	4	150	10

## PVC HOSE



### PVC Air Hose

#### Construction:

Tube: Black PVC compound

Reinforcement: High tensile strength yarn

Cover: PVC compound, available in any color

#### Features:

Economical, light weight, Low temperature alternative to rubber hose

Excellent abrasion resistance

300PSI 350PSI working pressure,4:1 Safety rate

U.V. and weather resistant

Service Temperature Range: -15°F to 150°F

Size available: 1/4", 5/16", 3/8", 1/2"; All length available.

#### Applications:

Transfer of air, water and mild water soluble chemicals

Ideal for in-plant outdoor applications that require an economical general purpose hose

Excellent air supply line for pneumatic tools and paint spray systems.

Nominal Dimension (inch)	Hose Dimension			Working Pressure (PSI)	Burst Pressure (PSI)	Net weight (kg/roll)	Measure (m <sup>3</sup> )
	I.D (mm)	O.D (mm)	Length (M)				
1/4	6	11.5	15.24	300	1200	1.75	0.005
1/4	6	12	15.24	350	1400	1.95	0.005
3/8	9.5	15	15.24	300	1200	2.35	0.007
3/8	9.5	15.24	15.24	350	1400	2.55	0.007
1/2	12.5	19	15.24	300	1200	3.35	0.011
1/2	12.5	19	15.24	350	1400	3.55	0.011

## PVC High Pressure Spray Hose



### Construction:

Unique PVC/Polyurethane blended core provides excellent resistance to aromatic hydrocarbon based chemicals

Reinforced with high tensile strength yarn

PVC ribbed cover provides abrasion resistance

### Characteristic:

High pressure resistance

Excellent and easy to handle

Good flexible and durability against climate, abrasion, chemical agent

Temperatures: -5°C To +65°C

Meets the international standard coupling according to the order

We can produce all kinds of specification according to customers' demand

### Applications:

General industrial applications

Compressed air in garages and service stations

Factory air lines

Automation machinery and pneumatic lines

Pneumatic tools, nail guns etc.

ID (mm)	WP (Bar)	BP (Bar)	Length (m)
7.5	40	160	100
7.5	50	200	100
8	30	120	100
8	40	160	100
8.5	40	160	100
8.5	50	200	100
8.5	30	120	100
10	30	120	100
10	40	160	100
13	30	120	100